

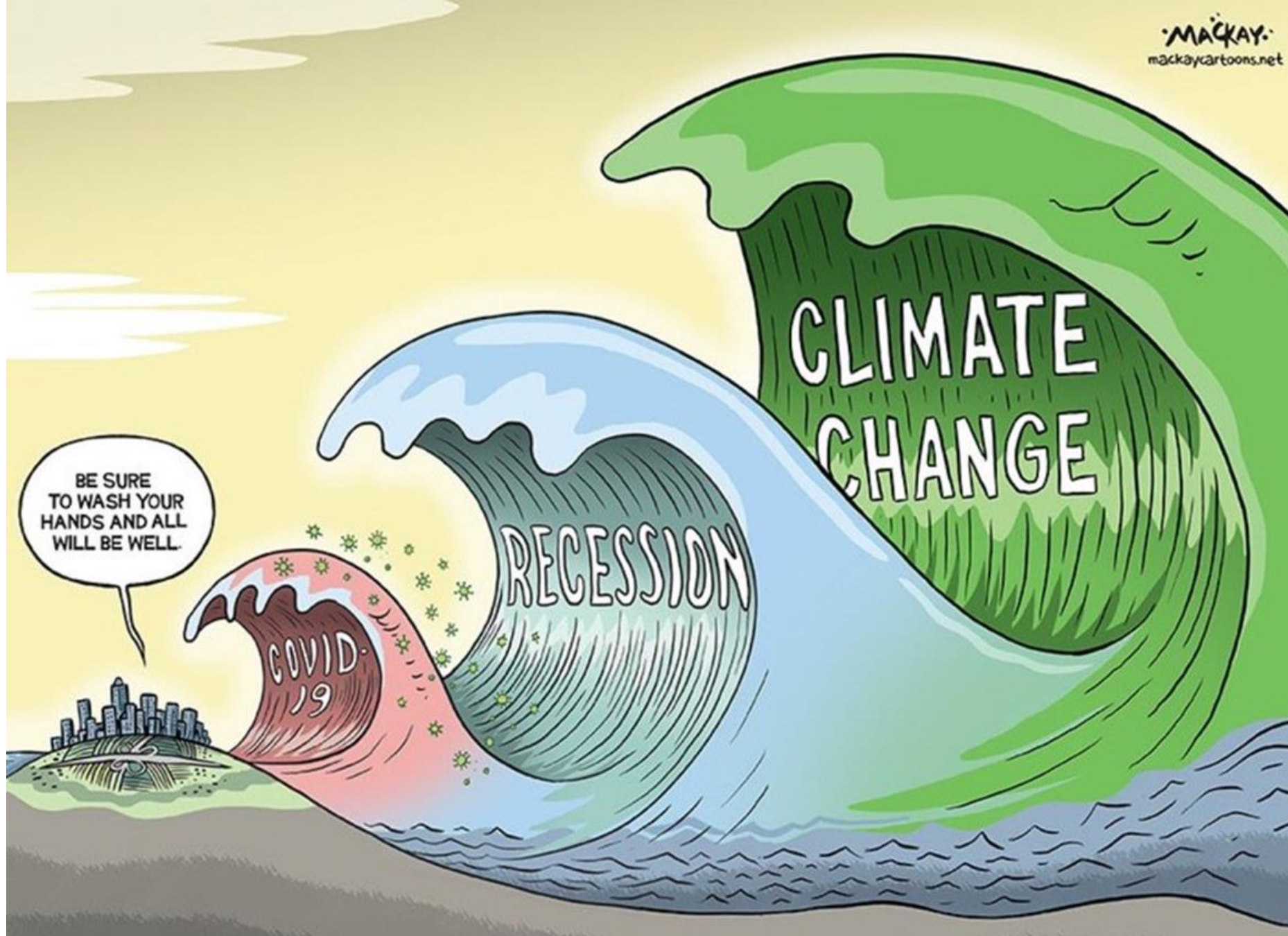
Transforming urban mobility

A focus on short trips

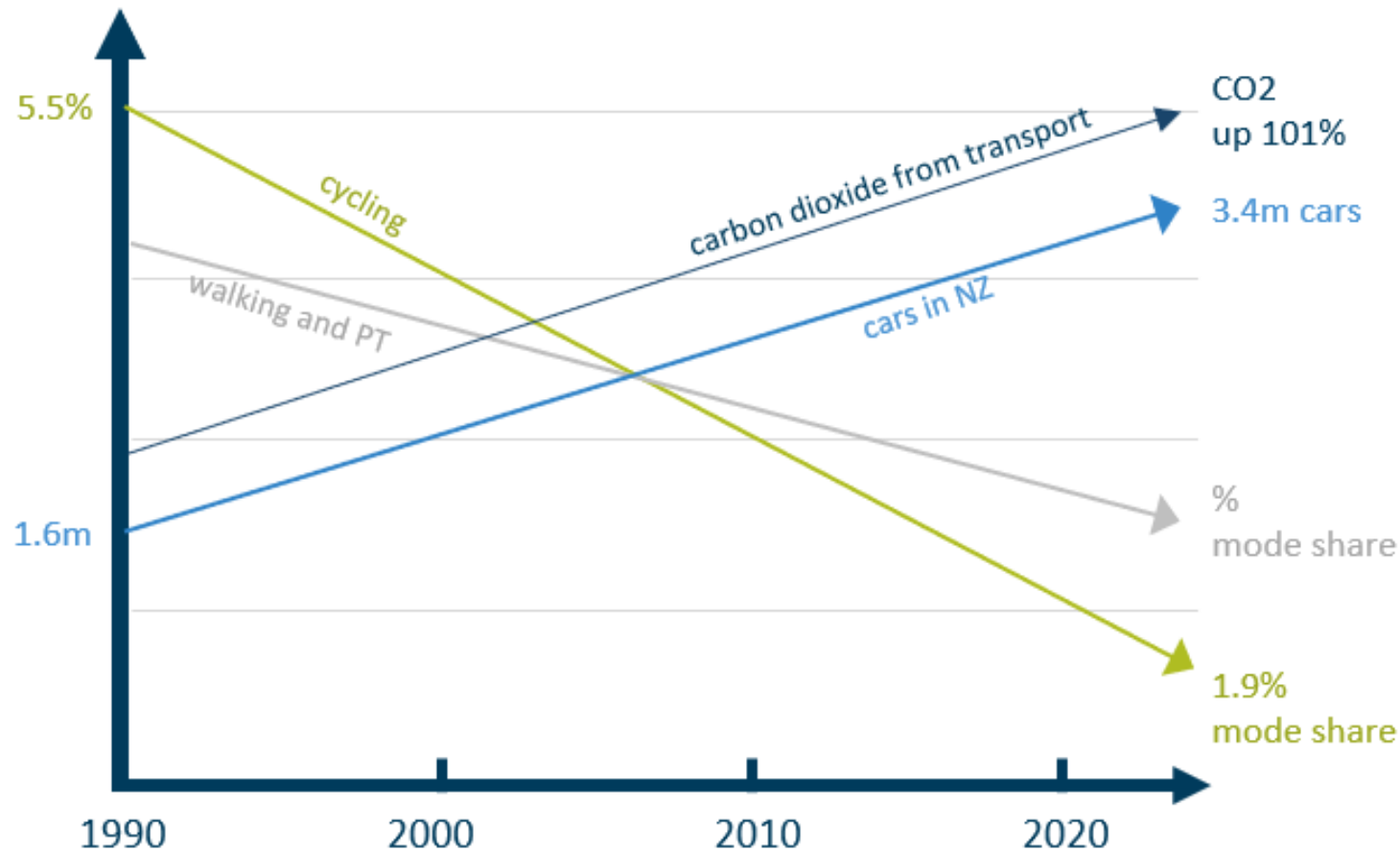
Joshua Arbury
Lead Advisor, Policy & Planning
Waka Kotahi/NZ Transport Agency

Technical Committee 2.1



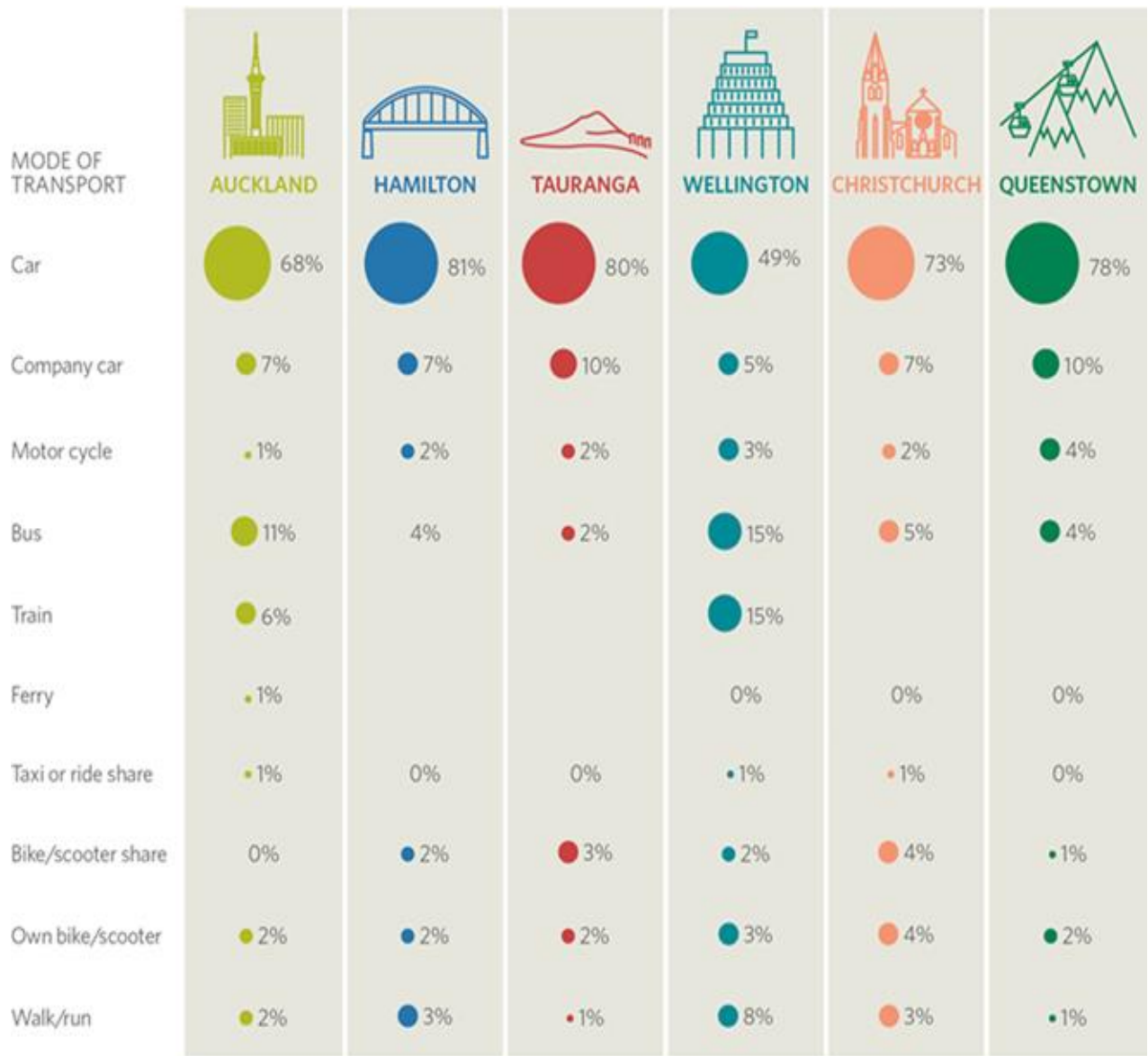


Target to reduce vehicle km travelled by 20% by 2035



The Opportunity

70% of journeys are under 5km

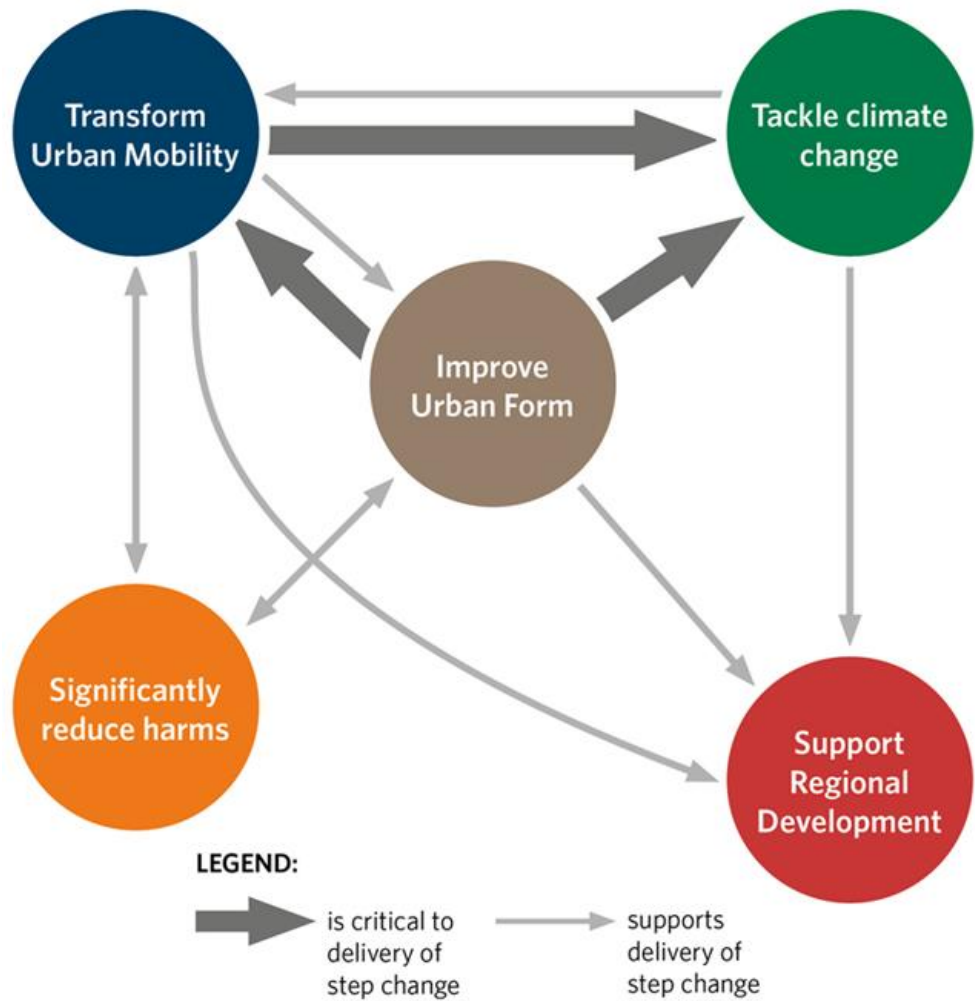


An aerial photograph of a city street with a blue semi-transparent text box overlay. The street has a yellow curb and a blue-painted area. A black car is parked on the left. A person in an orange jacket is walking on the sidewalk. The text box contains a quote about systemic change.

“Systemic change is where relationships between different aspects of the system have changed towards new outcomes and goals, and its driven by transformational, not incremental change.”

Forum for the Future

HOW THE STEP CHANGES WORK TOGETHER



Mode Shift Range

Overall, micromobility mode share is expected to be **between 3% and 11% by 2030** depending on a range of context factors.

This represents **a four-fold or more increase on existing cycle mode share**, which has significant implications for active modes funding.



E-Scooter

Up to **5.7%**
mode share



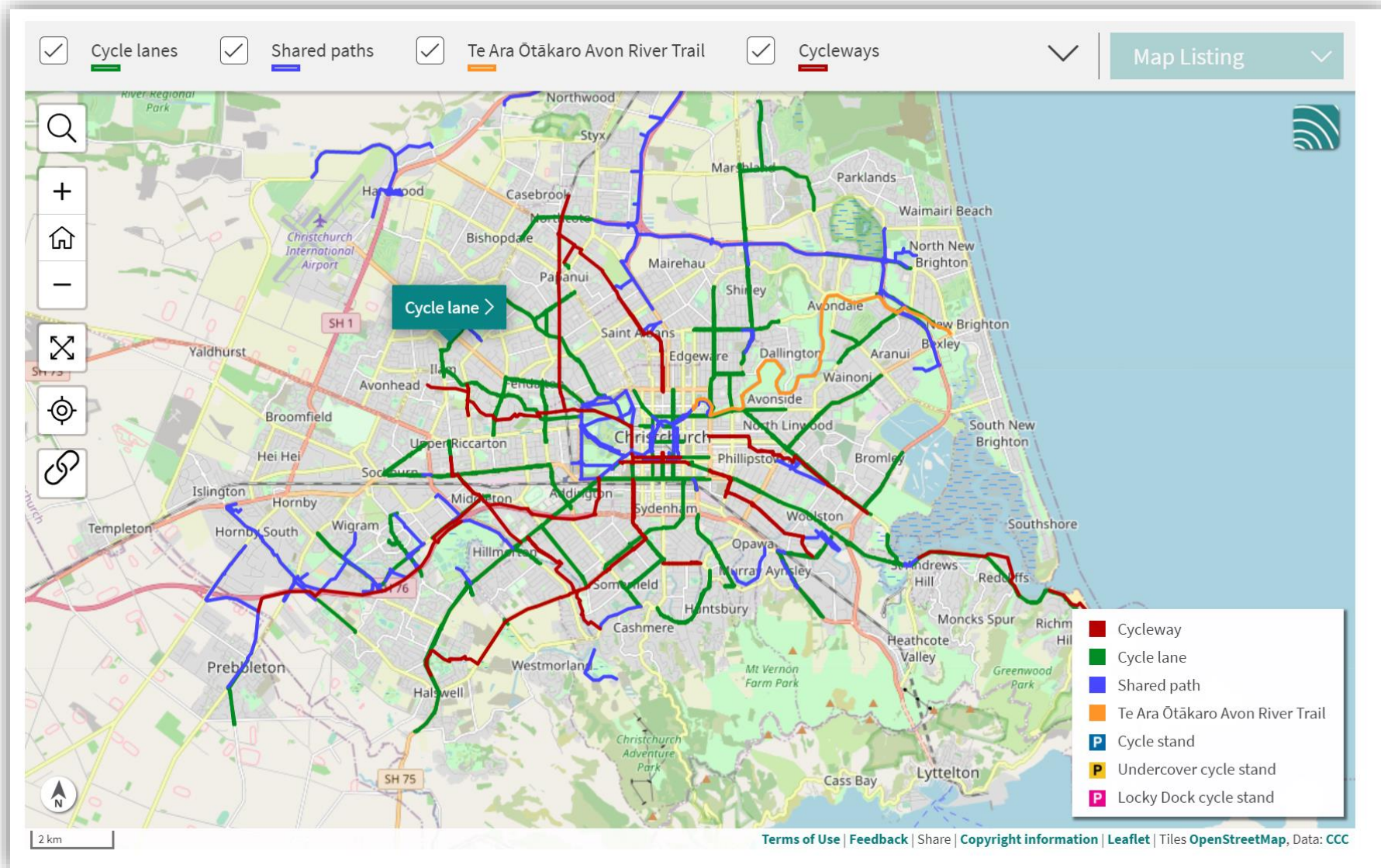
E-Bike

Up to **8.1%**
mode share

Connected Urban Networks



Connecting Christchurch's Network

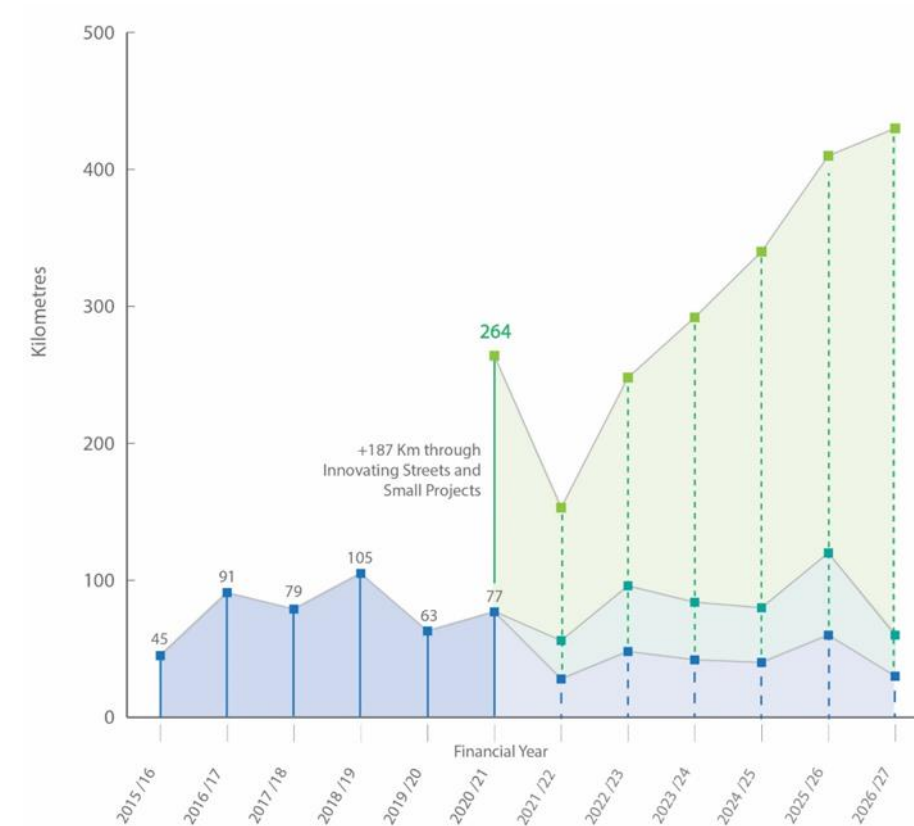


Proposed Auckland Network

Based on current levels of funding, costs per Km and rate of delivery it will take **168 years** and **\$6.7b** to deliver.



Pace and scale to match a crisis



2020/21 NLTP

Limited
prototypes

Rich small data local
learning and value

2021/24 NLTP

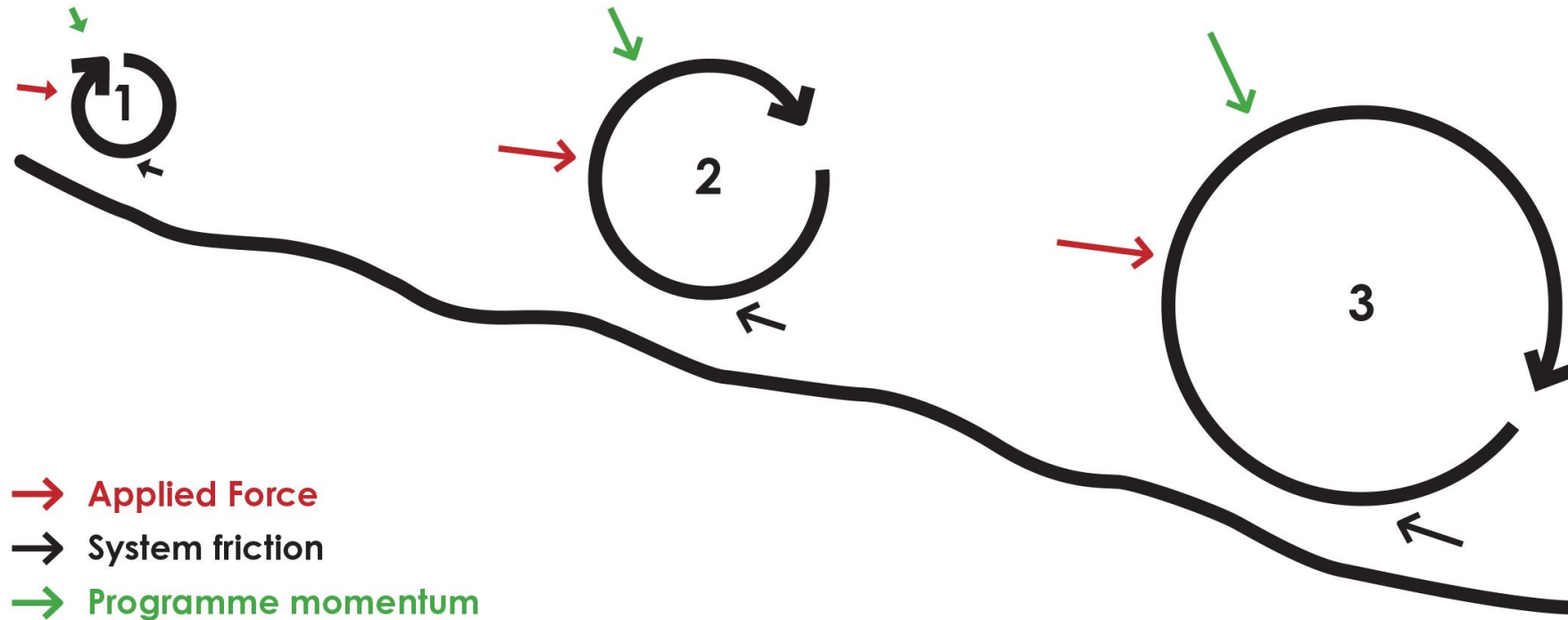
Prototypes in
multiple places

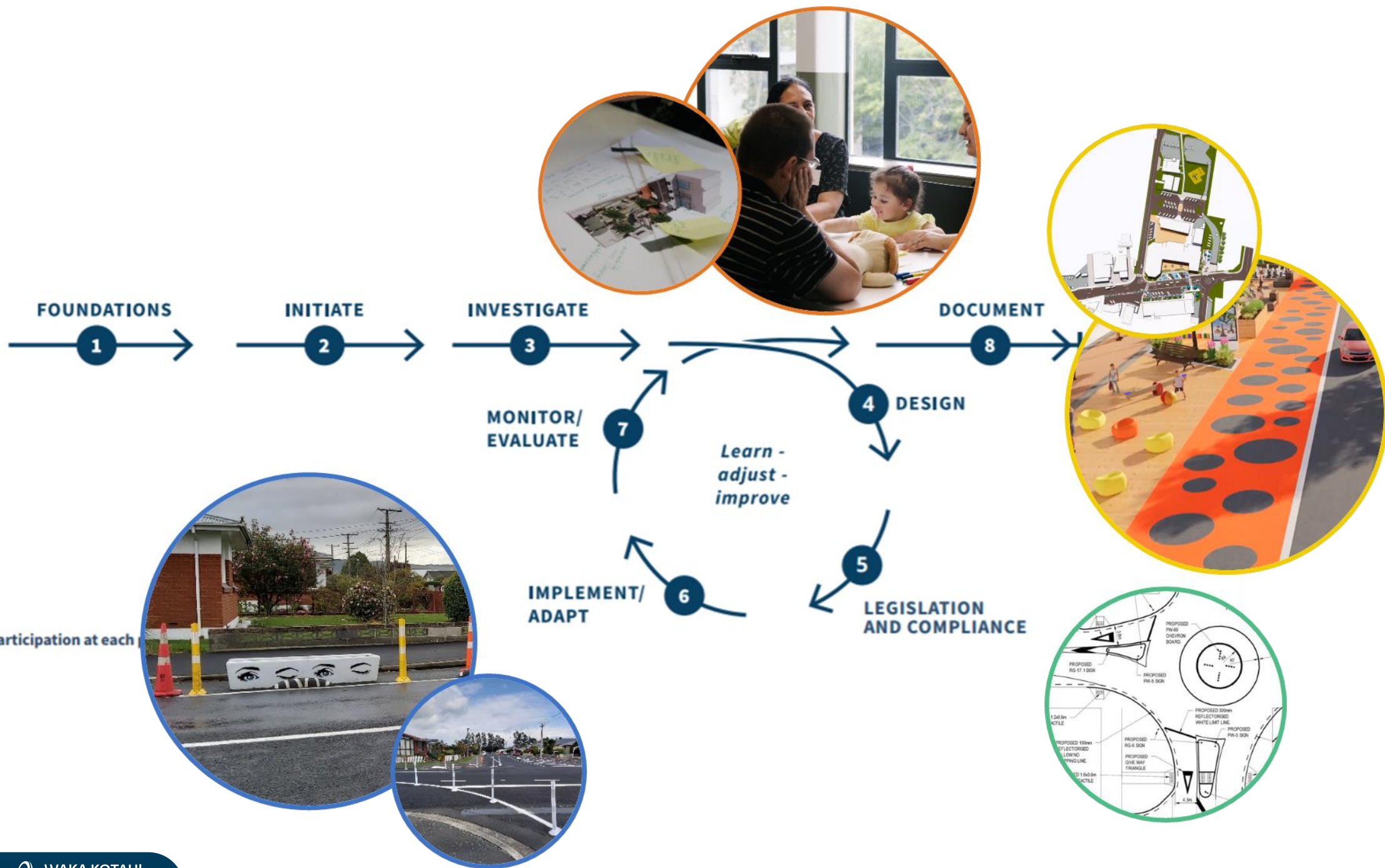
Shared learning and
value, early evidence

Future NLTPs

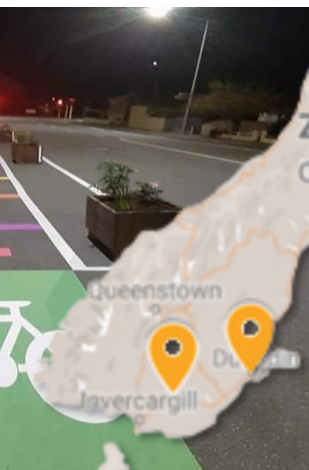
Prototypes in
many places

Convincing
evidence





- 📍 Town centre
- 📍 Low Traffic Neighbourhoods
- 📍 Safe Routes to School
- 📍 Cycleways



Havelock Street, Renwick

Speed reduction around schools



Havelock Street – East of Alma Street, Speed Comparison

	Feb-18	Jun-21	Difference	% Difference
Posted Speed Limit (km/h)	50	50		
Mean Speed recorded (km/h)	41.6	30.3	11.3	27%
85 th percentile speed (km/h)	50.4	37.3	13.1	26%
95 th percentile speed (km/h)	55.1	41.9	13.2	24%
Standard Deviation (km/h)	9.2	6.9	2.3	25%



Point England, Auckland

Low traffic neighbourhoods



Ferry Road, Christchurch

Prototyping street reallocation for cycling



Drews Avenue, Whanganui

Raising awareness of cultural narratives



Before



After

Community Play Streets, Tāmaki Makaurau

- ✓ Community connections
- ✓ Physical activity and play
- ✓ Re-imagining the purpose of streets



What next?

stuff

dominion post

Wellington plans to build 147km cycleway network

Joel MacManus · 05:00, Sep 16 2021



Time for faster, not just bigger, transport projects

Todd Niall · 05:00, Mar 02 2021



Learn more:

Streets for People: <https://www.nzta.govt.nz/roads-and-rail/streets-for-people/streets-for-people-programme-2021-2024/>

Cycling Action Plan: <https://www.nzta.govt.nz/walking-cycling-and-public-transport/cycling/strategies-and-plans/waka-kotahi-cycling-action-plan/>